



培風中學

Pay Fong Middle School, Malacca
Sekolah Menengah Pay Fong, Melaka.



培風中學宿舍 Pay Fong Hostel

築就溫馨園所

禮·雅·諧 築就溫馨園所

因应社会、学生家长的需求，培风中学自1981年起增办宿舍。

1. 近年来，因马六甲人口外移到郊区，导致家长为接送孩子而必须承受通勤塞车之苦。培风宿舍的增建旨在提供孩子便利的住宿，让其拥有更多宝贵的学习时间，也让家长免于受困车龙的无奈与时间浪费。
2. 现代家庭多为双薪家庭，父母皆忙于工作，无法全天照顾与接送孩子。随着宿舍的增建，学校将提供孩子安全和谐的学习与生活环境，让孩子们在上课日可专注于校园生活，周末则返家共享天伦之乐。
3. 现代孩子生活条件优渥，多数缺乏生活自理能力。宿舍生活可培养学生们独立自主、自治自律的能力，同时提升其照顾自己与他人和解决问题的能力。

为此，培风董事会发起宿舍扩建计划，以893新购校地为址，为莘莘学子建构“礼·雅·谐”的生活学习空间。

The hostel of Pay Fong Middle School, established in 1981, has expanded its hostel facilities to cater for the needs of the society, parents, and students. The expansion aims to provide convenient accommodation for students, save study time, and alleviate traffic congestion. The school aims to provide a safe, harmonious learning environment, allowing students to focus on their studies and return home on weekends. The expansion plan will use the newly acquired campus at 893 to create a "virtuous, elegant, and harmonious" living and learning space.

培风宿舍，以礼为根。

我们以礼教导孩子们尊重与关怀，塑造友爱互敬的温暖住所。

雅，是宿舍之美。

培风注重环境美学，打造安全舒适、雅致简朴的居住环境。

谐，是宿舍之爱。

老师引导孩子养成健康规律的生活习惯，让他们学习自立自律；宿舍生活让同学互助合作，从和谐环境中培养协作能力。

圍合空間，中心庭院 人文建築設計

设计采用合院式建筑布局，通过建筑体量的围合，在场地中央形成主广场，从而对空间进行集中规划。围合空间具有向心性和隐秘性，构筑了学生对于宿舍园区的空间归属感，营造出“心理安全岛”，与校本部的中场相呼应。

新宿舍保留古建筑的淡雅简朴，是培风朴实办学的文化风格展现。

除了考虑气候暖化与社区水利排水工程，宿舍空间更需要结合人智发展、人文艺术、生活化与实用性等考量，设计独有的培风宿舍文化空间。

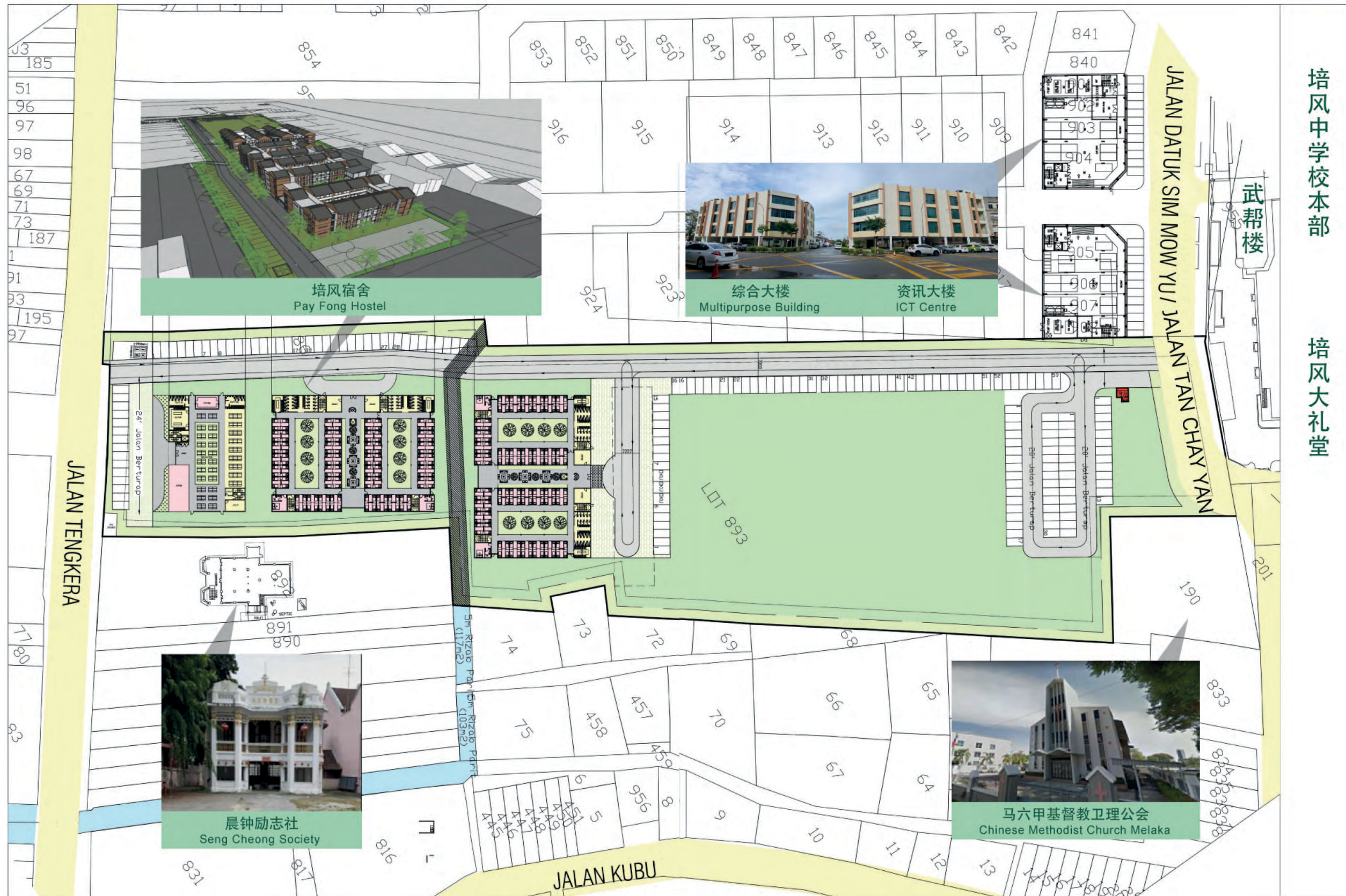
Enclosed Space, Central Courtyard Human-Centric Architectural Design

The Pay Fong hostel design employs a courtyard-style layout, establishing a central square that serves as a secure refuge for students. The goal of the hostel is to offer living and learning spaces conducive to physical and mental development. This includes taking into account aspects such as climate change, community water drainage engineering, human intelligence development, humanities, arts, livability, and practicality.



宿舍位置圖

Hostel Location Map



宿舍3D圖

Hostel 3D Renderings



具隱私考量的寢室設計

Privacy-Oriented Design

- 每間寢室供四人住宿。
 - 尊重學生個人隱私需求，宿舍生享有獨立的睡床、書桌、書架、衣櫃與置物櫃。
 - 尊重彼此的个人空间，不随意干扰他人，与室友相互信任与尊重，促进彼此的互动，创造温馨的居住氛围。
-
- Each room accommodates four people.
 - Students have individual beds, desks, bookshelves, wardrobes, and storage cabinets.
 - Meeting individual privacy needs and minimizing interference from others, fostering better interaction and living conditions.



明亮的用餐與公共空間

Bright Dining and Common Areas



捐獻留名方案

Donation Naming Programme



捐款命名 Donation Naming	数量 Quantity	立名款额 Naming Donation Amount
1. 大楼 (第一期) Building (Phase 1)	1幢 1 Block	三层建筑: 三百万令吉 RM 3,000,000 3 Levels: Three million Malaysian Ringgit
	2幢 2 Blocks	四层建筑: 四百万令吉 RM 4,000,000 4 Levels: Four million Malaysian Ringgit
2. 楼层 (可双人联名) Specific Level	11层 11 Levels	伍拾万令吉以上 RM 500,000 Five hundred thousand Malaysian Ringgit & above
3. 寢室 (4人) Room	192间 192 Rooms	伍万令吉以上 RM 50,000 Fifty thousand Malaysian Ringgit & above

饮水思源,

我们希望您乐善好施的传统美德可让莘莘学子代代承继,
并冀望可号召更多的人共同维护与发展华文教育,
为莘莘学子建设更好的学习与住宿环境。

故, 我们将把捐獻者之大名镶嵌于建筑中, 以兹纪念。

感谢您的捐赠与支持!

We believe that your generosity will inspire countless students to follow in your footsteps and enable us to mobilize more people to support Chinese education, thereby improving the living and learning environments for our students.

We will proudly inscribe your name on the structure, serving as a lasting testament to your commitment and unwavering support to our cause.



大楼捐獻留名示意图

Illustration of Building Naming through Donation



楼层捐獻留名示意图

Illustration of Level Naming through Donation



寢室捐獻留名示意图

Illustration of Room Naming through Donation